

Table 1. Overall Status by QRO

QRO	Sample Size	Number Incomplete	Number Complete	% Complete
AHPO	182	36	146	80.2%
HVPA	240	163	77	32.1%
IHA	651	200	451	69.3%
MCCO	188	26	162	86.2%
OM	165	76	89	53.9%
OSP	273	128	145	53.1%
UM	767	296	471	61.4%
UP	671	156	515	76.8%
WCM	441	42	399	90.5%
Total	3578	1123	2455	68.6%

* skipped patients are counted as complete

Overall Status: % Completion by QRO

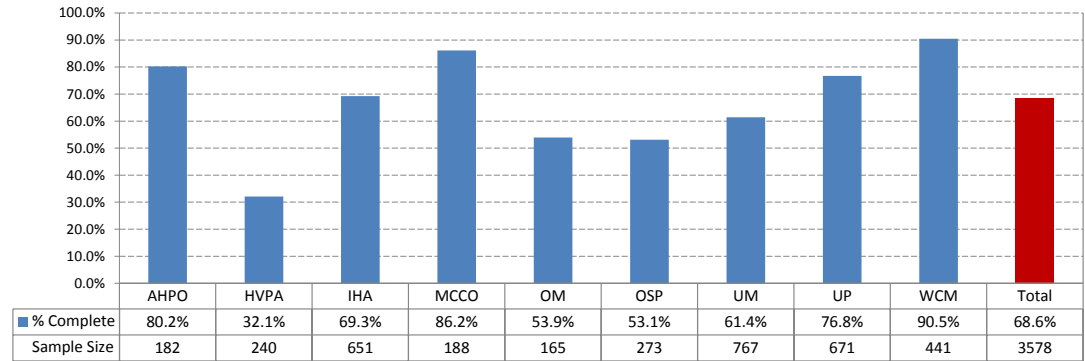


Table 2. Overall Status by Measure

Module	Sample Size	Number Complete	Number Skipped	% Complete	Number Consecutive	% Consecutive
CARE 1	616	283	36	52%	0	0%
CARE 2	616	527	3	86%	5	2%
DM	616	456	19	77%	0	0%
HTN	616	404	104	82%	1	0%
IVD	616	273	141	67%	0	0%
MH	616	59	458	84%	0	0%
PREV 5	616	517	11	86%	5	2%
PREV 6	616	512	1	83%	3	1%
PREV 7	616	524	3	86%	4	2%
PREV 8	616	527	2	86%	5	2%
PREV 9	616	503	5	82%	5	2%
PREV 10	616	482	2	79%	5	2%
PREV 12	616	460	45	82%	2	1%
PREV 13	750	301	66	49%	3	1%

* % Consecutive is calculated based on the number of consecutively abstracted divided by the minimum required of 248 patients for each measure (if it exceeds 248, shows 100%), just to provide an FYI. POM ACO targets to abstract 100% of the sampled 616 patients for each measure.

Overall Status: % Completion by Measure

