



GPRO January 2017

Sunday	Monday	Tuesday	Wednesday	Thursday	Friday	Saturday
01 New Year's Day	02	03	04	05	06	07
08	09	10 GPRO In-person Training	11	12	13	14
TRAINING Web Interface (WI) OPEN						
15	16	17 WI Tool OPENS	18	19 WI Q & A 1 - 2 p.m.	20 WI CLOSES @ 8 P.M. for Maintenance	21 WI CLOSED for Maintenance
22 WI CLOSED for Maintenance	23 WI RE-OPENS @ 6 A.M.	24	25	26 WI Q & A 1 - 2 p.m.	27	28
29	30 Status Report to Board	31	01	02	03	04
05	06	07	08	09	10	11




GPRO

February

2017

Sunday	Monday	Tuesday	Wednesday	Thursday	Friday	Saturday
29	30	31	01	02	03	04
				WI Q & A 1 - 2 p.m.		
05	06	07	08	09	10	11
	Status Report to Board			WI Q & A 1 - 2 p.m.		
12	13	14	15	16	17	18
	Status Report to Board			WI Q & A 1 - 2 p.m.		
19	20	21	22	23	24	25
	Status Report to Board			WI Q & A 1 - 2 p.m.	WI CLOSES @ 8 P.M. for Maintenance	WI CLOSED for Maintenance
26	27	28	01	02	03	04
WI CLOSED for Maintenance	WI RE-OPENS @ 6 A.M. Status Rpt to Board					
05	06	07	08	09	10	11

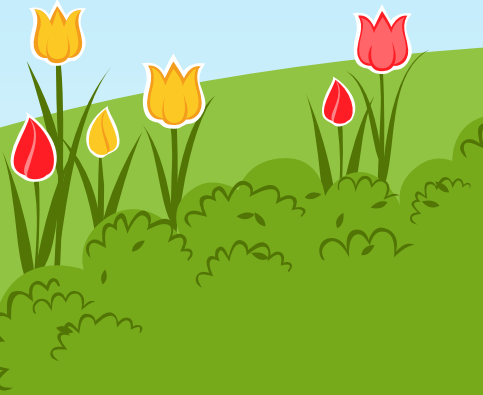


Sunday	Monday	Tuesday	Wednesday	Thursday	Friday	Saturday
26	27	28	01	02	03	04
				WI Q & A 1 - 2 p.m.		
05	06 Status Report to Board	07	08	09 WI Q & A 1 - 2 p.m.	10	11
	Internal Review					
12	13 Status Report to Board	14 WI Q & A 12 - 1 p.m.	15	16	17 WI Tool CLOSES	18
	Internal Review					
19	20	21	22	23	24	25
26	27	28	29	30	31	01
02	03	04	05	06	07	08

GPRO

March

2017



April 2017

Sunday	Monday	Tuesday	Wednesday	Thursday	Friday	Saturday
26	27	28	29	30	31	01
02	03	04	05	06 WI Lessons Learned 1 - 2 p.m.	07	08
09	10	11	12	13	14	15
16	17	18	19	20	21	22
23	24	25	26	27	28	29
30	01	02	03	04	05	06